



Carers Strategy 2010-2013 - Report Summary

Department of adult social care services

**Produced by Lucy Yung
Adult Social Care Commissioning Team
July 2010**

Who is a carer?

A carer is an individual, an adult or a child, who provides unpaid help and support on a regular basis to a partner, family member, friend or relative. They may provide practical help, care, physical or emotional support to a person who is vulnerable for a wide variety of reasons, whether through age, illness or disability.

Why do we need a strategy?

There are over 5.2 million carers in England and Wales and 24,058 in Plymouth who identify themselves as unpaid carers - this includes 8970 stating that they provide more than 20 hours of caring per week to someone. They are referred to as the forgotten army of the health and social care system.

- The value of carer support is estimated as the same as the total of UK spending on health - over £87 billion
- In Plymouth there is a gap between levels of service for carers and the estimated need, with two thirds being older carers
- People providing high levels of care are twice as likely to be permanently sick or disabled
- 58% of carers are women and 42% are men (Carers UK 2007)

National Direction of Carers Support

“Our Health Our Care Our Say” (2006) sets out the future for the NHS and statutory social services. It includes the priorities needed for these sectors to support carers. Promising a new deal for carers it led to an update of the National Carers Strategy in 2008 “Carers at the heart of 21st Century Families”

Key commitments include improvements in the following areas:

- Information and advice services
- Additional breaks provision
- Better NHS support for carers through GP practices
- Employment and skills support
- Strengthening of emotional support services
- Greater support to young carers
- Emergency support to carers in their own home
- Listening to carers
- Training support to carers
- Training support to professional in contact with carers

The Putting People First agenda sets out the intention to introduce a more sustainable and person centred system for social care. This will require authorities to invest in early intervention and prevention to enable more people to live independent lives for longer and also to support individuals,

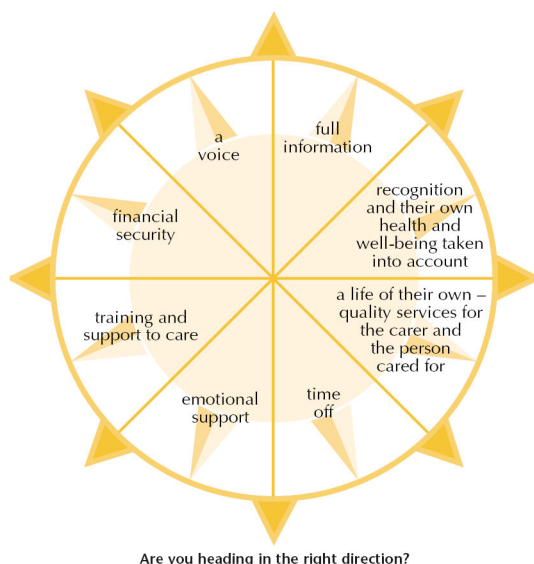
(service users and their carers), to take more control over the type of services they receive and how they are delivered.

The focus of support through this revision of Plymouth’s carers strategy will align our approach with that of Putting People First agenda.

Our strategy will deliver the following objectives:

- Reflect national policy and good practice
- Deliver person centred services for carers in line with Putting People First
- Support health colleagues in recognising and supporting carers in the city

The Carers Strategy key priorities are taken from The Carers Compass (King Fund 1998) sets out a framework based on research that reflects the priorities expressed by carers.



Under each of The Compass headings, this document highlights progress made since the publication of the Plymouth 2006-2008 Carers Strategy and proposes priorities for future development.

Carers Services from 2009/10

Service	No of Services provided	No Individual Carers Helped	Cost
Befriending Services	3370	208	£49,294
Carers Champions	1430	1041	£98,500
Simply Counselling	379	21	£10,000
Direct Services	888	966	£330,591
Carers Emergency Response Service	33	676	£100,000
Respite Breaks	215	197	£55,827

Short breaks to the cared for people are also provided through the care management teams.

Consultation Activities

The Carers Strategy has been consulted on throughout its development at the Carers Strategic Partnership and Planning Group (CSPPG). CSPPG is attended by adult social care commissioners, health commissioners, learning disability partnership, children's services, various carer organisations and individual carers.

Please note the membership of the CSPPG has been revised and is now called the Carers Strategic Partnership Board (CSPB). The first CSPB meeting is scheduled for beginning of September 2010.

The strategy was a regular item on the CSPPG agenda where comments and feedback were given and recorded. The strategy was amended as appropriate.

Once the strategy had been agreed by CSPPG it was put out for public consultation from 8th October 2009 for 12 weeks. The closing date for all comments and feedback was 28th February 2010. The public had a number of ways to provide feedback:

- Strategy and feedback questionnaire were loaded on the Plymouth City Council website
- Electronic copies of the strategy and questionnaire were circulate to all providers and staff with a vested interest in services being provided for carers in the city
- A copy of the strategy and questionnaire were also posted to selected carers via the carers team including carers who care for someone with a learning disability
- Specific events were held for carers who care for someone with a learning disability to provide comments and feedback as a group
- An article and information regarding the Carers Strategy was published in the local paper. Information was provided on how people could access the strategy and provide feedback.

A total of 18 individual carers provided feedback and comments on the strategy. Feedback was also received from groups via Plymouth LINK, Carers Champions, Learning Disability Carers Events and the Supporting People Team. Comments and feedback were collated and amendments were made to the strategy as appropriate.

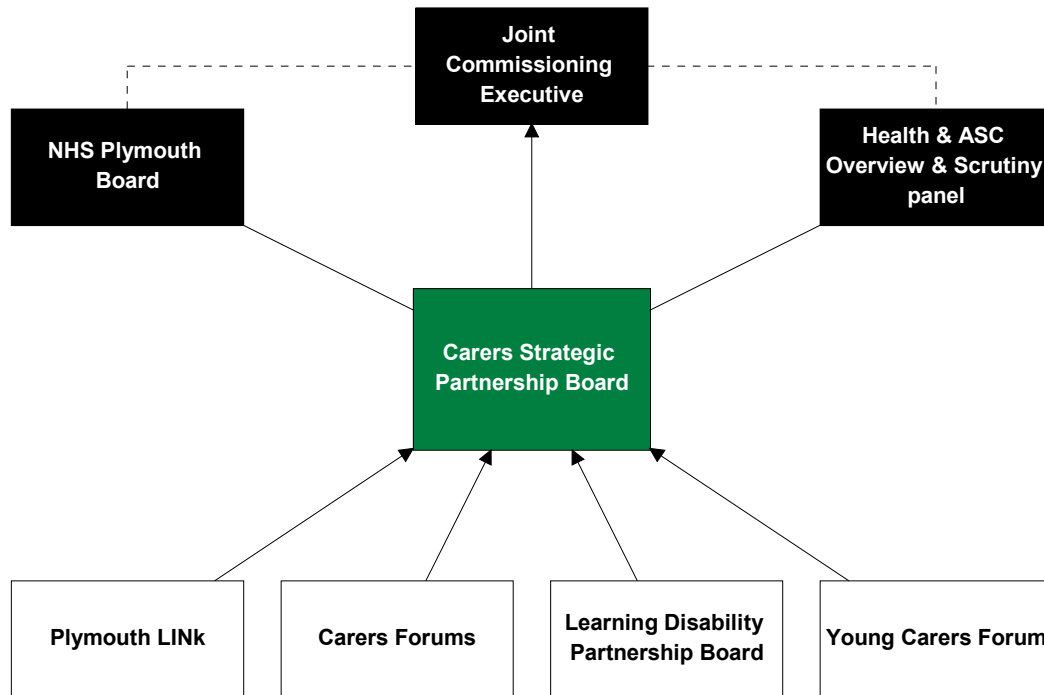
Carers Strategic Partnership Board

The CSPB will ultimately monitor progress of the Carers Strategy, engage carers and carer organisations in the strategic planning and development of carers services across the Plymouth with opportunities for joint working.

The group will strive to actively seek the participation from carers in policy making, planning and delivery of services via the Carers Forum.

The focus will be on services for adult carers of adults. However in order to address cross cutting themes links will be made with children services.

Governance framework overview



Membership

Name	Job Title	Organisation
Pam Marsden - Chair	Joint Director of Strategic Commissioning	PCC
Debbie Butcher	ASC Commissioning Manager	PCC
Lucy Yung	ASC Commissioning Assistant	PCC
Elaine Fitzsimmons	Assistant Director - Clinical Service Design	NHS
Julie Wilson	Mental Health Commissioning Manager	NHS
Angela MacBlain	Community Care Worker - LD Carers	LD Partnership
Sarah Newham	TBC	Job Centre Plus
TBC	Childrens service representative	PCC
Mary Partridge	Social Inclusion Manager	Carers Champions
Kay O'Shaughnessy	TBC	Carers UK
TBC	Carers Forum Representatives	Carers Forum